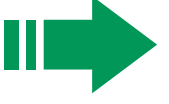


řehirlerimizi 2023'e ve geleceđe hazırlıyoruz.

Hedef 1 Milyon 200 Bin Konut



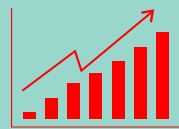
100 bin
NÜFUSLU
30 řEHİR



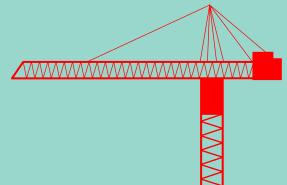
2002-2011
500 BİN
KONUT



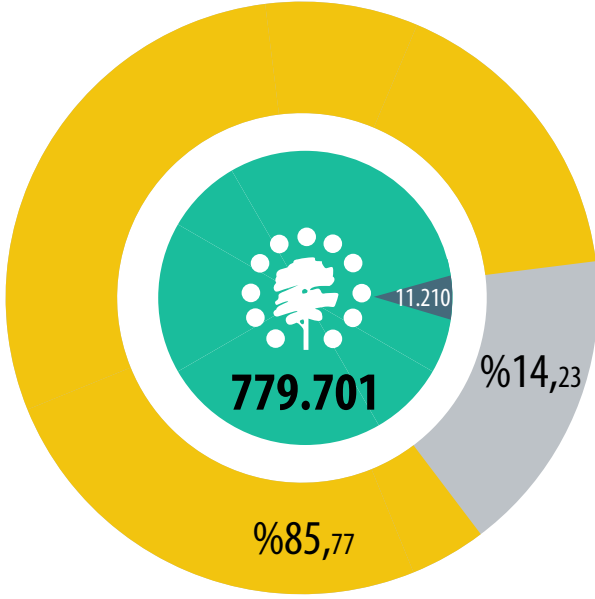
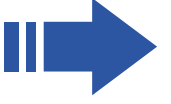
2011-2023
700 BİN
KONUT



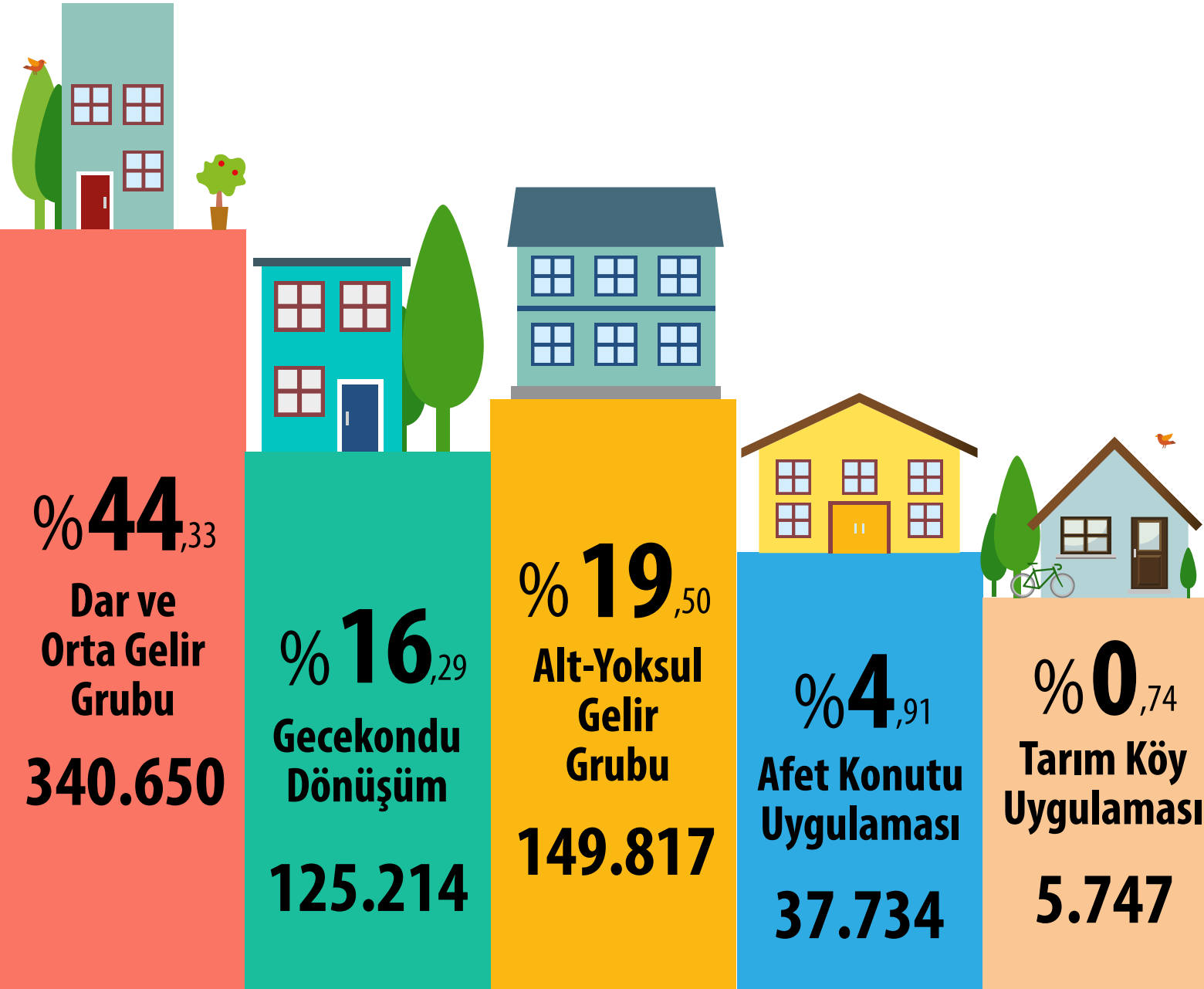
88,65
MİLYAR TL
YATIRIM



KONUT ÜRETİMİ

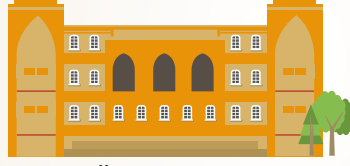


Sosyal Konut üretimi	659.162
Kaynak Geliştirme	109.329
İhale Süreci Devam Eden	11.210
Genel Toplam	779.701

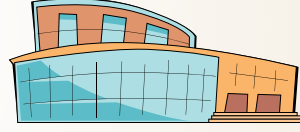




Okul 1.031



Üniversite 19



Spor Salonu 991



Kütüphane 42



Yurt Pansiyon 189



Kamu Hiz. Bin. 186



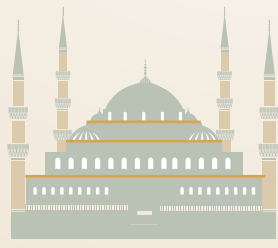
Hastane 266



Sağlık Ocağı 95



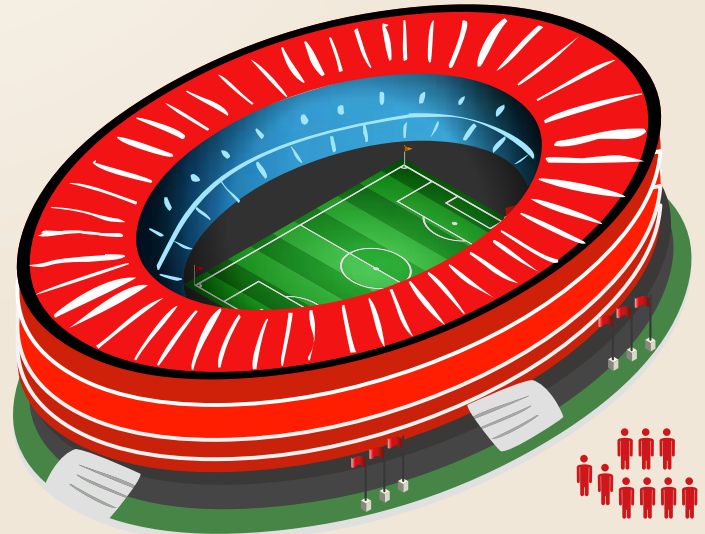
Ticaret Merkezi 787



Camii 626

Sevgi Evi, Engelsiz Yaşam Merkezi, Huzurevi, Eczane, Karakol, Askeri Hizmet Binaları, Halk Eğitimi Merkezi, Kültür Merkezi, Toplum Sanayi Sitelerindeki İş Yeri Sayısı, Uygulama Otel ile Birlikte Tüm Sosyal Donatıların Toplamı...

9.266



Stadyum 19